



# JUNIOR FUNDRAISING PACK



the Cotswolds  
**Dogs & Cats**  
Home



**TIPS, ADVICE & EVERYTHING YOU NEED TO KNOW ABOUT  
FUNDRAISING FOR CDCH!**

**[WWW.CDCH.ORG.UK](http://WWW.CDCH.ORG.UK)**

# THANK YOU!!!



We want to say a HUGE thank you for raising money for CDCH. Every year, we support over 1,000 animals through our rehoming centre and our welfare clinic. None of this could be possible without you.

## HOW YOUR FUNDRAISING HELPS

**£28**

Will help pay for an animal's initial vet visit

**£120**

Will help pay for a dog's meals for a whole month

**£60**

Will help pay for a cat's meals for a whole month



**HELP US SAVE**

**ANIMAL'S LIVES**

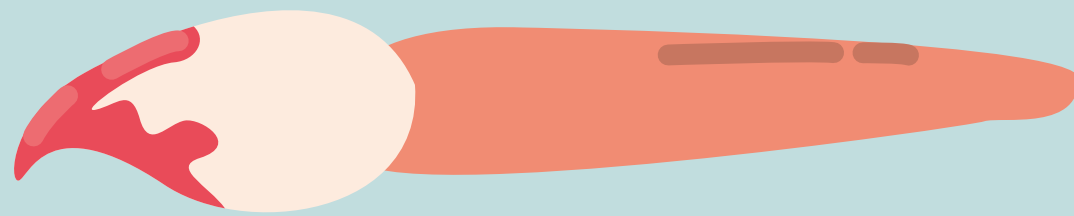
# WHO WILL YOU FUNDRAISE WITH?

## ON YOUR OWN

Why not set yourself a challenge? There are lots of ideas below, or you can create your own idea.

### GET CREATIVE!

Put your crafty skills to the test and make something you can sell. Why not make some cards, bookmarks or bespoke pet portraits?



## DONATE YOUR BIRTHDAY!

Ask your friends and family to give you a donation for CDCH instead of a present this year. Any donation, big or small, will really help.



## TAKE ON A CHALLENGE!

You could ask people to sponsor you to take on a BIG challenge. You could do a sponsored walk, sponsored silence or maybe give up your favorite treat for a whole month!



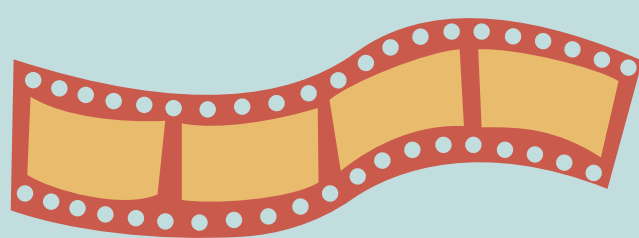
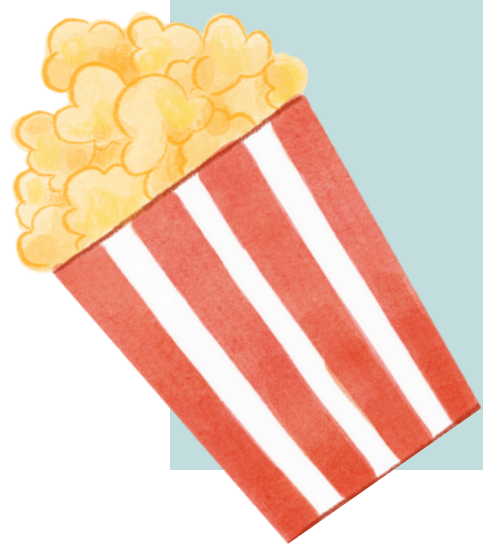
# WHO WILL YOU FUNDRAISE WITH?

## WITH YOUR FAMILY OR FRIENDS

Ask your family or friends to get involved with your fundraising. Here are some ideas for you.

### HOST A MOVIE NIGHT!

Why not convert your front room into your very own cinema? Pop open the popcorn, turn down the lights and charge for entry to your very own movie night!



### HOLD A CAKE SALE!

Get your baking skills on and make cakes to raise money. You could ask your friends and family to bake too or they could be your customers!



### GROUP RUBBISH CLEAR UP!

Ask a group of friends or family to join you in a 'rubbish clear up'. You could ask people to sponsor your efforts. Cleaning up the community and supporting animals - win win!



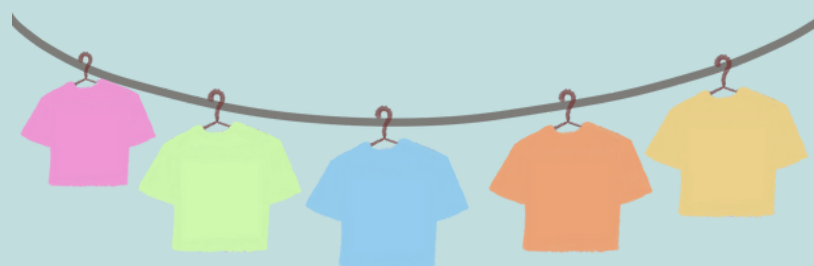
# WHO WILL YOU FUNDRAISE WITH?

## AT SCHOOL

Why not ask if you can fundraise with your friends at school? Here are some ideas to help you and your friends. Don't forget, ask your school first.

### NON-SCHOOL UNIFORM DAY!

Organise a day where you and your friends can wear something other than your school uniform, you could even have a 'dress like an animal' day!



### GUESS THE SWEETS IN THE JAR!

Fill a jar with some yummy sweets. Charge someone to take a guess at how many sweets are in the jar. The winner has the jar of sweets, the entry fee can go towards your fundraising target!



### HOST A SALE AT SCHOOL!

You could host your very own sale at school and donate your earnings. This could be pre-loved items such as old toys or books you no longer use, or you could make things to sell.



# GET PLANNING!

Use this section to help you plan your fundraising activities.



**What is your fundraising idea?**

**Who is involved with your fundraising and who will support you?**

**What do you need to do to prepare for your fundraising event?**

**Why have you chosen this challenge and why do you want to raise funds for CDCH? This might help encourage donations from your supporters so make sure to share this with them.**





As a thank you, everyone who takes part in our Junior Fundraising Challenge, will receive their very own CDCH embroidered badge!

For more information and to claim your badge, email [fundraising@cdch.org.uk](mailto:fundraising@cdch.org.uk).

## HOW TO PAY IN YOUR DONATION

You can pay in your donation through our website. Visit [www.cdch.org.uk](http://www.cdch.org.uk) and click 'donate'.

Pop in and see us with your donation, we would love to thank you in person. You can use our sponsor form in this booklet if you would like to collect cash donations. If you need another sponsor form, just let us know!

You can set up a JustGiving page.

Don't forget to email us on [fundraising@cdch.org.uk](mailto:fundraising@cdch.org.uk) to claim your badge!



## OTHER INFORMATION

If you are under 18 years old, please ensure you get permission to fundraise from a parent or guardian.

If you hold an event in a public space, or at school, please make sure you get the relevant permission to do so.

If you would like any help from our fundraising team, please contact us on [fundraising@cdch.org.uk](mailto:fundraising@cdch.org.uk). We can help you with fundraising tips, advice and more!

# Junior Fundraising Challenge

# Sponsor Form



I, ..... am taking part in Junior Fundraising Challenge in aid of The Cotswolds Dogs & Cats Home  
 My email OR parent/ guardians: .....

"As I have ticked the gift aid box, I understand I must have paid or will pay an amount of income tax and/or capital gains tax in this tax year (6 April to 5 April) that is at least equal to the amount of tax that all the charities I donate to will reclaim for that tax year. I also understand that other taxes such as VAT and Council Tax do not qualify. The charity will reclaim 25p on every £1 that I donate."

Please note, for us to claim Gift Aid from your donation you should write clearly (use block capitals if possible), provide your full name, address and postcode and do not use ditto marks. Thank you

| Full Name<br>(PLEASE USE CAPITALS) | Home Address<br>(PLEASE USE CAPITALS) | Postcode | Amount | Gift Aid<br>✓ | Date | Paid<br>✓ |
|------------------------------------|---------------------------------------|----------|--------|---------------|------|-----------|
|                                    |                                       |          |        |               |      |           |
|                                    |                                       |          |        |               |      |           |
|                                    |                                       |          |        |               |      |           |
|                                    |                                       |          |        |               |      |           |
|                                    |                                       |          |        |               |      |           |
|                                    |                                       |          |        |               |      |           |
|                                    |                                       |          |        |               |      |           |
|                                    |                                       |          |        |               |      |           |
|                                    |                                       |          |        |               |      |           |
|                                    |                                       |          |        |               |      |           |
|                                    |                                       |          |        |               |      |           |

Please send us your sponsor form with your cash/ cheques (made payable to The Cotswolds Dogs & Cats Home) to:  
 The Cotswolds Dogs & Cats Home, Beechmeadow Farm, Elmcote Lane, Cambridge, Gloucestershire, GL2 7AS

## Thank you!





the Cotswolds  
**Dogs & Cats**  
Home

**THANK  
YOU!!!**



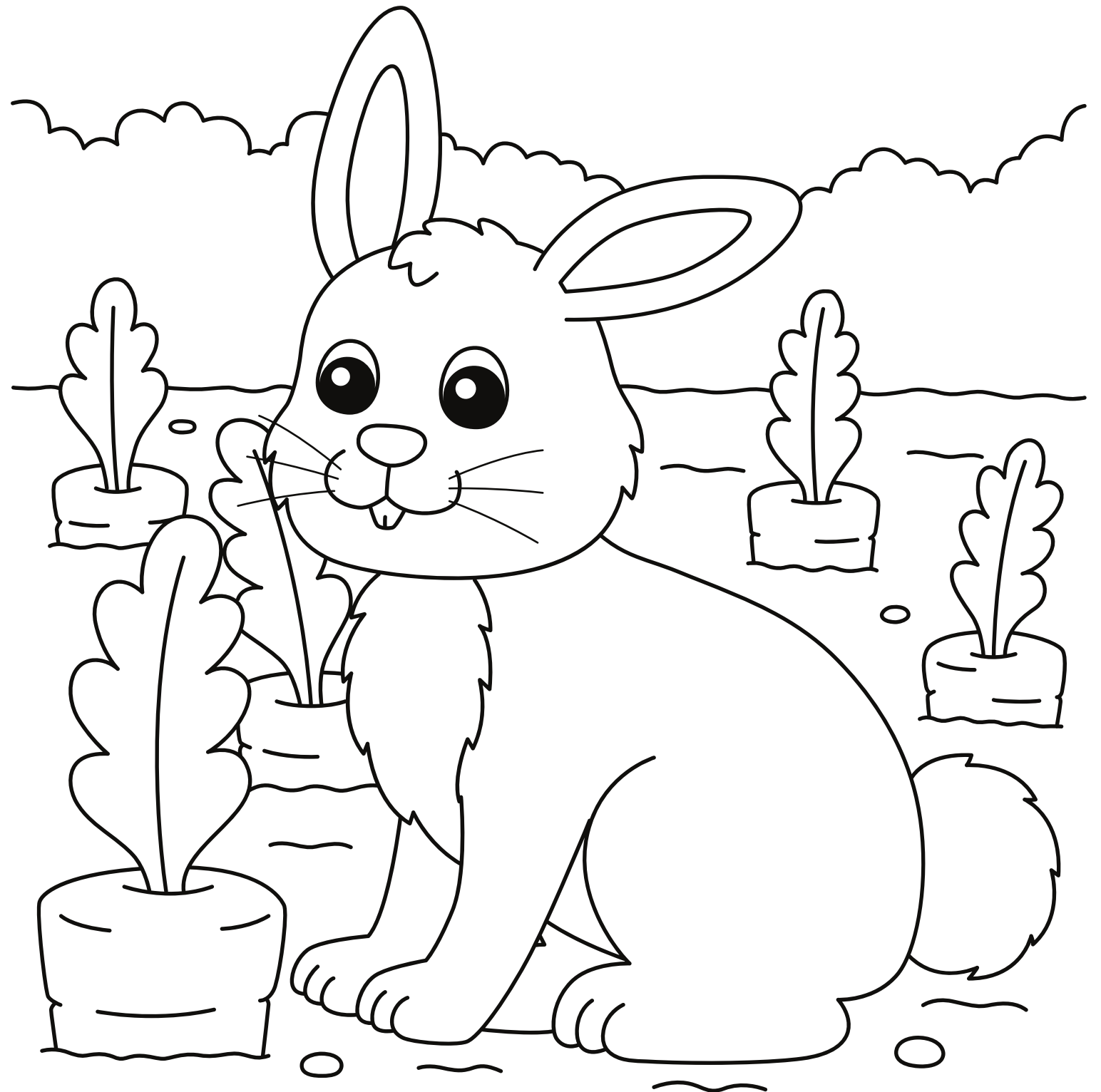
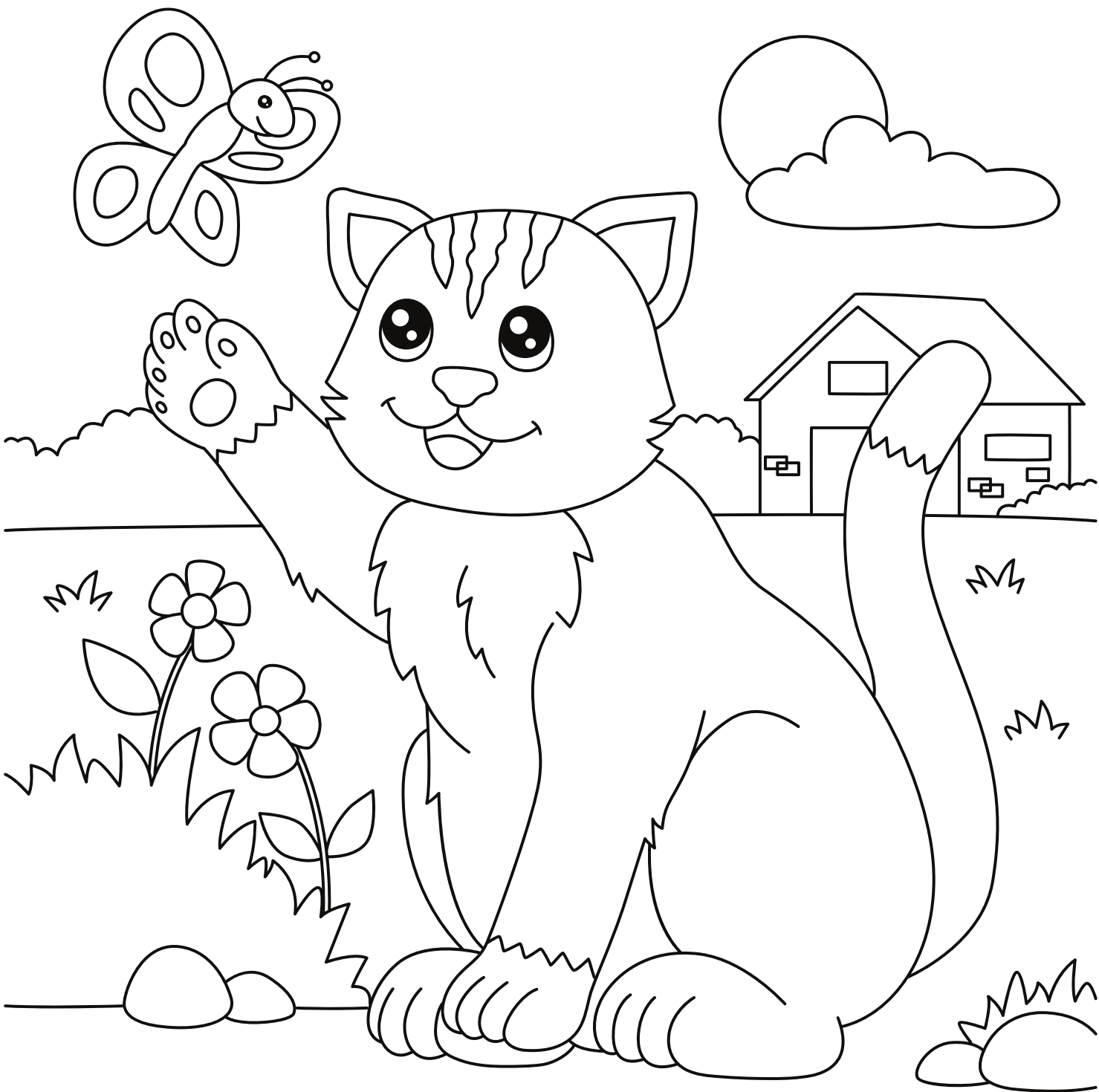
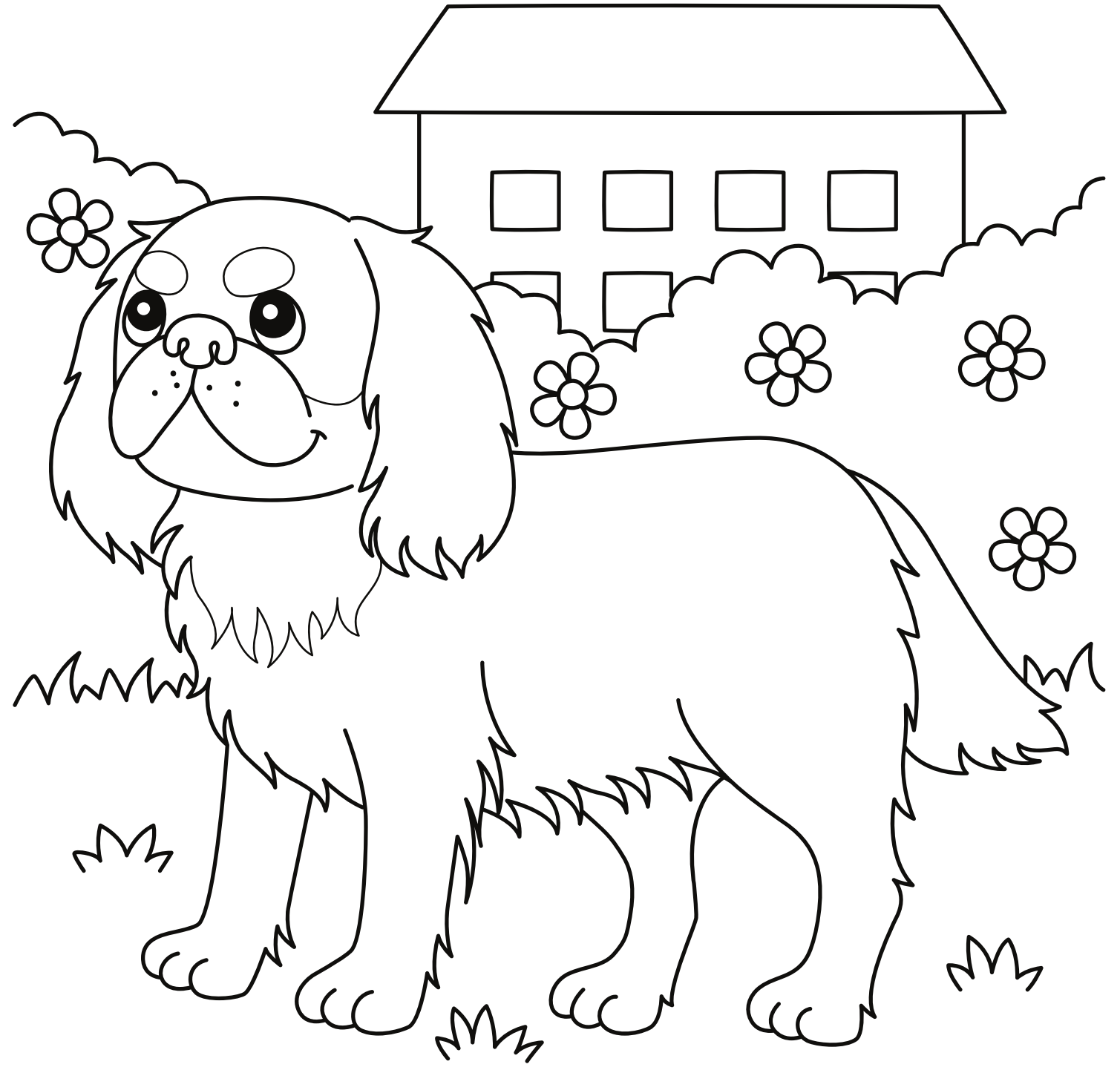
You are PAWSOME!! If you need any help along the way,  
email us at [fundraising@cdch.org.uk](mailto:fundraising@cdch.org.uk).

**MOST IMPORTANTLY, have fun with your fundraising!**

**[WWW.CDCH.ORG.UK](http://WWW.CDCH.ORG.UK)**

# JUST FOR FUN!!

Have a go at our 'Just For Fun' section!



# WORDS TO FIND!

CAT  
RABBIT  
MOUSE  
TOY

HAMSTER  
RESCUE  
BED  
BALL

DOG  
HOME  
COTSWOLDS  
ADOPT

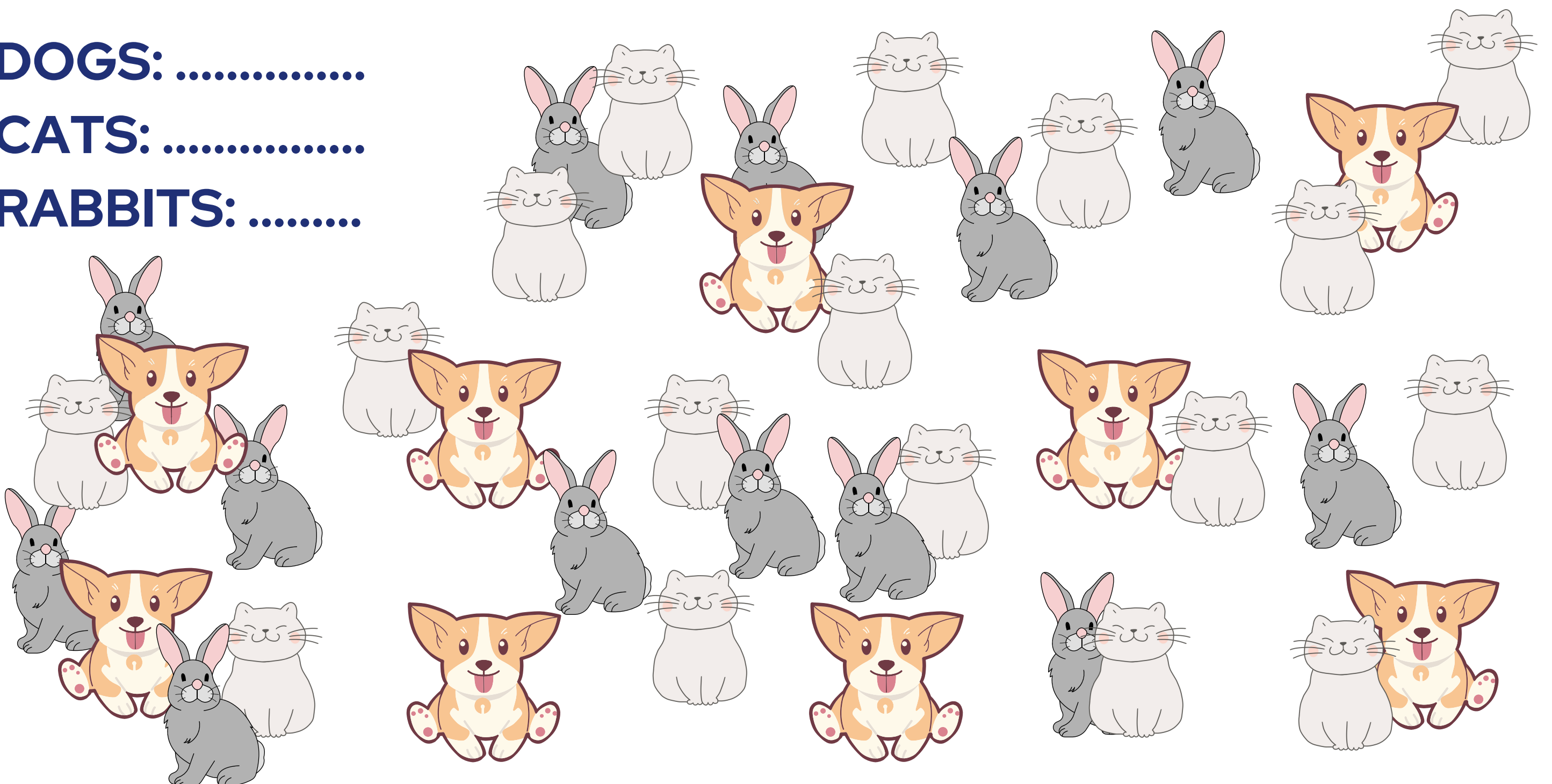
|   |   |   |   |   |   |   |   |   |   |   |   |
|---|---|---|---|---|---|---|---|---|---|---|---|
| C | H | G | L | H | F | W | Q | D | C | J | Y |
| L | A | C | A | O | C | S | O | O | R | O | T |
| R | E | T | S | M | A | H | T | D | A | G | J |
| E | E | R | C | E | S | S | F | T | B | H | U |
| S | C | X | B | R | W | T | P | H | B | E | D |
| C | V | A | A | O | T | O | Y | U | I | Y | I |
| U | Z | B | L | E | D | D | O | I | T | O | Y |
| E | N | D | L | A | M | O | U | S | E | G | F |
| A | S | V | B | N | S | G | P | L | K | J | D |

## HOW MANY CAN YOU SEE?

DOGS: .....

CATS: .....

RABBITS: .....





# the Cotswolds Dogs & Cats Home



[WWW.CDCH.ORG.UK](http://WWW.CDCH.ORG.UK)